

ESPACE



ESPACE

ESPACE



AAF935

ROOF BARS

ESPACE IV and Grand Espace IV Phases 1 and 2

- Set of 2 pre-assembled roof bars ■ Aluminium section, painted black
- Plastic base ■ Weight limit on roof (including the bars): 80 kg.

ROOF BARS

Reference	77 11 218 421
LT	0.2 h

BAR RAILS Only for Espace
(Grand Espace is already equipped)

Reference	77 11 218 422
LT	0.5 h

Adapter
(for bike carrier, ski carrier)

Reference	77 11 218 405
-----------	----------------------

QUICK RELEASE TOW BAR

- Ball removable without tools in only a few seconds ■ Designed for intensive use ■ Maintains the aesthetics of the vehicle ■ Maximum towable weight: 2 000 kg ■ N.B.: the electrics kit module allows the use of the turn indicator fault repetition warning light on the dashboard, even when towing.

ESPACE IV Phases 1 and 2

Reference	77 11 218 330
LT	1 h

Grand **ESPACE IV** Phases 1 and 2

Reference	77 11 219 806
LT	1 h

Electrics kit
7 pins without module

Reference	77 11 226 828
LT	1 h

Electrics kit
7 pins with module

Reference	77 11 226 830
LT	1 h

Electrics kit
13 pins without module

Reference	77 11 226 829
LT	1 h

Electrics kit
13 pins with module

Reference	77 11 226 831
LT	1 h



AAF936



AAF937

SWAN NECK TOW BAR

■ Ball removable with tools ■ Designed for intensive use ■ Maximum towable weight: 2 000 kg ■ N.B.: the electrics kit module allows use of the turn indicator fault repetition warning light on the dashboard, even when towing.

ESPACE IV Phases 1 and 2

Reference	77 11 218 329
LT	1 h

GRAND ESPACE IV Phases 1 and 2

Reference	77 11 219 805
LT	1 h

Electrics kit 7 pins without module

Reference	77 11 226 828
LT	1 h

Electrics kit 7 pins with module

Reference	77 11 226 830
LT	1 h

Electrics kit 13 pins without module

Reference	77 11 226 829
LT	1 h

Electrics kit 13 pins with module

Reference	77 11 226 831
LT	1 h

BIKE CARRIER ON TAILGATE

■ Can carry 3 bikes ■ Impossible to open tailgate with the bike carrier fitted and bikes loaded ■ Supplied with plate support ■ Provide 13-pin tow bar electrics kit (with or without module) ■ Compatible with Espace IV Phases 1 and 2.

Reference	77 11 223 724
LT	1 h

Adapter, 7/13 pins

Reference	77 11 226 911
-----------	---------------

Tow bar electrics kit 13 pins without module

Reference	77 11 226 829
-----------	---------------

Tow bar electrics kit 13 pins with module

Reference	77 11 226 831
-----------	---------------

Replacement parts

Third brake light, TÜV certified	77 11 222 804
Replacement light plate, TÜV certified	77 11 223 733



AAF938



AAF952

BODY KIT

Espace IV Phase 1 only

COMPLETE KIT

Reference	77 11 221 391
LT	4h

FRONT END PANEL

Reference	77 11 221 392
LT	1 h

RIGHT-HAND SIDE SILL

Reference	77 11 221 395
LT	1 h

LEFT-HAND SIDE SILL

Reference	77 11 221 394
LT	1 h

REAR END PANEL

Reference	77 11 221 393
LT	1 h

ALUMINIUM DOOR HANDLES

■ Replace the original door handles when the vehicle is not fitted with aluminium handles

Reference	77 11 236 200
-----------	---------------



TINTED WINDOWS

■ 3D ■ Pre-cut to corresponding size and pre-formed for easy fitting ■ The front window kits do not include the windscreen ■ The rear window kits include the rear screen ■ AESTHETICS: personalises the vehicle ■ DISCRETION: hides passengers and objects from prying eyes ■ COMFORT: protects against heat by reflecting infrared rays and reduces dazzle ■ ECONOMY: up to 30 % of the energy consumption devoted to heat comfort ■ SAFETY: increases resistance of windows to impacts in the event of attack.

ESPACE IV

Front windows

Reference	77 11 419 140
LT	1.30

Rear windows

Reference	77 11 419 365
LT	2.80

Grand ESPACE IV

Front windows

Reference	77 11 419 364
LT	1.30

Rear windows

Reference	77 11 419 141
LT	2.80

Tinted film tooling kit

Reference	77 11 419 550
-----------	---------------



DOMAINE SEAT COVER

- Classic model combining manufacturer design and vehicle protection
- Woven fabric for central section ■ Accompanying section in serge velour
- Compatible with airbags ■ Quick and easy seat cover to install .

5 SEATS

Reference	77 11 237 576
LT	1.5 h

I ADDITIONAL SEAT

Reference	77 11 237 577
LT	0.5 h

RIVE GAUCHE SEAT COVER

- Top-of-the-range model ■ Alcantara grey-beige with checked woven fabric and light grey stitching in central section ■ Upholstery finishing in top-stitching, great attention to detail ■ Compatible with airbags ■ Quick and easy seat cover to instal.

5 SEATS

Reference	77 11 237 580
LT	1.5 h

I ADDITIONAL SEAT

Reference	77 11 237 581
LT	0.5 h



BLASON SEAT COVER

- Sporty and top-of-the-range, this model is the emblem of the sports range ■ Alcantara, partially embossed in the central section and velour accompanying section ■ Recommended for carbon interior colour schemes ■ Compatible with airbags ■ Seat cover quick and easy to install.

5 SEATS

Reference	77 11 237 578
LT	1.5 h

I ADDITIONAL SEAT

Reference	77 11 237 579
LT	0.5 h



AAG918

ÉVOLUTION RELIEF MAT

- Made-to-measure ■ Velour carpet: 100% polyamide, 425 g/m², velour finish, 100% rubber undercoat ■ Velour heel mat: 100% polyamide, 425 g/m², velour finish, heat-sealed ■ Marked with vehicle name embroidered on driver's mat ■ Top-of-the-range finish enhanced with twin-binding in nubuck ■ High level of safety by means of highly-innovative reinforced adhesion undercoat ■ Easy to handle ■ Flexible, waterproof and rugged material ■ Easy to clean.

ESPACE IV

- Dark carbon colour
- 2-piece set - front seats.

Reference	77 11 229 382 LH-drive
-----------	---------------------------

ESPACE IV

- Dark carbon colour.
- 2nd and 3rd rows.

Reference	77 11 230 420
-----------	---------------

Grand ESPACE IV

- Dark carbon colour.
- 2nd and 3rd rows.

Reference	77 11 230 421
-----------	---------------

EXECUTIVE CARPET MAT

- Made-to-measure ■ Velour carpet: 100% polyamide, 700 g/m², velour finish, granulated undercoat in natural latex ■ Velour heel mat: 100% polyamide, 425 g/m², velour finish, heat-sealed ■ Marked with vehicle name embroidered on the driver's mat ■ Top-of-the-range velour heel mat, excellent finish ■ Fastened to floor by special fastening avoiding all hindrance of the pedals ■ Waterproof and washable.

ESPACE IV

- 2-piece set - Front seats.

Grey colour	77 11 224 371 LH-drive
	77 11 224 372 RH-drive
Blue colour	77 11 224 373 LH-drive

ESPACE IV

- 2nd and 3rd rows

Reference	77 11 230 422
-----------	---------------

Grand ESPACE IV

- 2nd and 3rd rows

Reference	77 11 230 423
-----------	---------------



AAG059



AAF942

NOVESTRA MAT

■ Made-to-measure ■ 100% rubber structure, 1400 g/m² ■ Marked with the vehicle's name ■ Waterproof and washable by water jet ■ Heel mat on driver's mat ■ Improved adhesion by studded undercoat.

ESPACE IV

■ 2-piece set - Front seats.

Reference	77 11 221 521 LH-drive
-----------	---------------------------

ESPACE IV

■ 2nd row

Reference	77 11 221 522
-----------	---------------

ESPACE IV

■ 3rd row

Reference	77 11 221 523
-----------	---------------

Grand ESPACE IV

■ 3rd row

Reference	77 11 221 524
-----------	---------------

COMPARTMENT TRAY UNDER REAR PARCEL SHELF

■ Can be fitted on Espace IV and Grand Espace IV ■ Practical for storing, holding and protecting small objects ■ Adjustable separating compartments, removable partitions and non-skid bottom ■ Plastic material matching the original colours.

Reference	77 11 221 527
LT	0.2 h



AAF951

DIVIDABLE LOADLINER

■ Perfectly matches the shape of the boot ■ Allows transport of all types of product, especially dirty objects ■ Semi-rigid material ■ Easy to remove from the boot to be washed by water jet ■ Separable tray with aluminium removable partitions.

ESPACE IV

Reference	77 11 419 236
-----------	---------------

Grand ESPACE IV

Reference	77 11 419 237
-----------	---------------



AAF950

ENVELOPE NET

■ Can be fitted on Espace IV and Grand Espace IV ■ Holds small objects in the boot ■ 3 different compartments ■ Is adapted to the Espace by means of specific fastenings fitted as original vehicle equipment.

Reference	77 11 221 528
LT	0.2 h

CARGO NET

■ Can be fitted to Espace IV and Grand Espace IV ■ Practical for holding objects in the back of the boot ■ Attached by means of fastenings fitted as original vehicle equipment.

ESPACE IV

Before July 2005

Reference	77 11 221 529
LT	0.2 h

ESPACE IV

From July 2005

Reference	77 11 419 238
LT	0.2 h



AAF949

SEPARATING GRILLE

■ Ensures genuine separation between the vehicle boot and the passenger compartment, reserved for the passengers ■ Stainless steel ■ Compatible with sunroof.

Reference	77 11 221 540
LT	0.5 h



AAF944



AAF947

REFRIGERATION UNIT

- Capacity: 32 litres ■ Can cool or heat to plus or minus 20° C in relation to the passenger compartment temperature (max.: 60° C and min.: 2° C)
- Fitted with carrying handles, it can be used outside the vehicle as a cool box.

ESPACE IV Phase I until July 2005

- Attached to the vehicle rails ■ Very easy assembly and disassembly by means of "Quick fastening" system.

Reference	77 11 221 530
-----------	---------------

ESPACE IV Phase I from July 2005 and Phase 2

- Attached to slide and lock seat system.

Reference	77 11 228 956
-----------	---------------

STORAGE UNIT

Phase 1 vehicles from July 2005 and Phase 2

- Attached to slide and lock seat system ■ Identical to refrigeration unit, without cooling function ■ Capacity: 32 litres.

Reference	77 11 228 957
-----------	---------------



AAF945

MOBILE ASHTRAY

- Destined for passengers in rear seats ■ Identical to original vehicle equipment.

Reference	82 00 079 131
-----------	---------------

SUNBLINDS

- Roller blinds ■ Provide thorough protection against the sun's rays.

SIDE WINDOWS

Reference	77 11 221 531
LT	0.5 h

REAR QUARTER WINDOWS AND TAILGATE

ESPACE IV

Reference	77 11 221 532
LT	0.5 h

Grand ESPACE IV

Reference	77 11 221 533
LT	0.5 h



AAF943

**ADDITIONAL REAR SEAT
ESPACE IV**

■ Complete assembled rear seat 1 / 1

(A) = Without armrest, with predisposition

(B) = Without armrest, without predisposition

DESIGNATION	CRITERION MATERIAL	COLOUR CRITERION		LEVEL	REFERENCE
		RSA	FAURECIA		
ESPACE IV Phase 1					
Rear seat Ceylan / Finois (B)	DRAP01	HARM01	Dark grey-beige	E1 Authentique	77 01 052 057
Rear seat Sam / Finois (B)	DRAP06	HARM02	Navy blue	E1 Authentique	77 01 052 058
Rear seat CT Sam / Recolorise (B)	DRAP08	HARM01	Carbon	E1 Authentique	77 01 060 751
Rear seat Vimio / Finois (A)	DRAP02	HARM01	Dark grey-beige	E2 Expression	77 01 052 059
Rear seat Meko / Finois (A)	DRAP03	HARM02	Navy blue	E2 Expression	77 01 052 060
Rear seat Eco Ete / Alcantara (A)	DRAP04	HARM01	Dark grey-beige	E3 Privilège	77 01 052 067
Rear seat Courtier / Alcantara (A)	DRAP05	HARM02	Navy blue	E3 Privilège	77 01 052 068
Rear seat Leather /Perfore leather (A)	CUIRO1	HARM01	Dark carbon	E2 Expr E3 Privil Opt E5	77 01 052 069
Rear seat Leather /Perfore leather (A)	CUIRO3	HARM02	Navy blue	E2 Expr E3 Privil Opt E5	77 01 052 379
Rear seat Leather /Perfore leather (A)	CUIRO4	HARM01/02	Dark grey-beige	E2 Expr E3 Privil Opt E5	77 01 052 380
Rear seat Leather / Alcantara (A)	CUIRO6	HARM01	Dark grey-beige	E5 Initiale	77 01 052 381
Rear seat Dynamique, without slide and lock (A)	DRAP07	HARM01	Carbon	E2 Dynamique	77 01 060 752
Rear seat Vimio / Finois, slide and lock (A)	DRAP02	HARM01	Dark grey-beige	E2 Expression	77 01 061 916
Rear seat Meko / Finois, slide and lock (A)	DRAP03	HARM02	Navy blue	E2 Expression	77 01 061 918
Rear seat Eco Ete / Alcantara, slide and lock (A)	DRAP04	HARM01	Dark grey-beige	E3 Privilège	77 01 061 917
Rear seat Courtier / Alcantara, slide and lock (A)	DRAP05	HARM02	Navy blue	E3 Privilège	77 01 061 919
Rear seat Dynamique, slide and lock (A)	DRAP07	HARM01	Carbon	E2 Dynamique	77 01 061 920
Rear seat CT Sam / Recolorise slide and lock (B)	DRAP08	HARM01	Carbon	E1 Authentique	77 01 061 921
Rear seat Leather /Perfore leather, slide and lock (A)	CUIRO1	HARM01	Dark carbon	E2 Expr E3 Privil Opt E5	77 01 061 922
Rear seat Leather /Perfore leather, slide and lock (A)	CUIRO3	HARM02	Navy blue	E2 Expr E3 Privil Opt E5	77 01 061 923
Rear seat Leather /Perfore leather, slide and lock (A)	CUIRO4	HARM01/02	Dark grey-beige	E2 Expr E3 Privil Opt E5	77 01 061 924
Rear seat Leather / Alcantara, slide and lock (A)	CUIRO6	HARM01	Dark grey-beige	E5 Initiale	77 01 061 925
ESPACE IV Phase 2					
Rear seat C T Cornice / Canu (A)	DRAP09	HARM03	Dark carbon	E1 Authentique	77 01 063 208
Rear seat C T AROLA (A)	DRAP10	HARM03	Dark carbon	E2 Expression	77 01 063 209
Rear seat C T AROLA (A)	DRAP10	HARM04	Beige	E2 Expression	77 01 063 210
Rear seat C T KRONA + Alcantara (A)	DRAP11	HARM03	Dark carbon	E3 Privilège	77 01 063 211
Rear seat C T KRONA + Alcantara (A)	DRAP11	HARM04	Beige	E3 Privilège	77 01 063 212
Rear seat Dynamique, slide and lock (A)	DRAP07	HARM01/03	Carbon	E2 Dynamique	77 01 061 920
Rear seat Leather riviera Alcantara (A)	CUIRO9	HARM04	Carbon	Dynamique	77 01 065 185
Rear seat Dynamique Plidiag	DRAP12	HARM04	Carbon	Dynamique	77 01 065 184
Rear seat Leather Riviera (A)	CUIRO7	HARM04	Dark carbon	E2 Exp E3 PrivilOpt Dy	77 01 063 213
Rear seat Leather Riviera (A)	CUIRO8	HARM04	Beige	E2 Exp E3 Privil	77 01 063 214
Rear seat Leather Haircell perfore nubuck, CF (A)	CUIR10	HARM04	Beige	E5 Initiale	77 01 063 215
Rear seat Leather Haircell perfore nubuck, Beige (A)	CUIR11	HARM04	Dark carbon	E5 Initiale	77 01 063 216
Rear seat Leather Haircell perfore nubuck Beige (A)	CUIR12	HARM04	Chestnut	E5 Initiale	77 01 063 217



AAF954 (FOTO 1)



AAF955 (FOTO 2)

"SURMEZUR" MUDFLAPS

■ Protect the bottom of the car body from splashes.

FRONT MUDFLAPS (Photo 1)

Reference	77 11 221 307
LT	0.25 h

REAR MUDFLAPS (Photo 2)

■ Can only be fitted on Espace IV.

Reference	77 11 221 308
LT	0.25 h

AIR DEFLECTORS

■ Allow the air in the passenger compartment to be regenerated ■ Set of 2 embeddable deflectors.

Reference	77 11 221 439
LT	0.5 h



AAF953



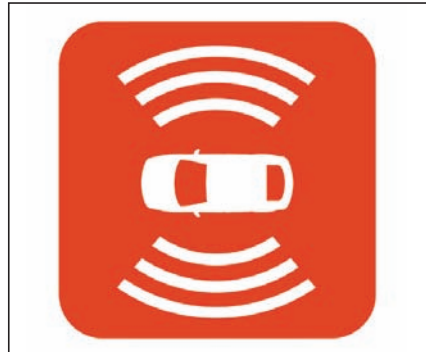
AAF952

FOG LIGHT KIT

■ Complete kit ■ Improves driving safety ■ Improves the aesthetics of the front panel of the vehicle ■ Can be fitted on the Espace IV and Grand Espace IV, Phase 1 only.

Reference	77 11 221 870
LT	2.5 h

SAFETY / PROTECTION AND MULTIMEDIA



SPECIFIC ALARM

- Low-consumption economic alarm ■ Volumetric protection by ultrasound
- Perimetric protection by contacts ■ High-power self-powered siren
- Original or emergency personal code (PIN) ■ Door-locking controlled when activated
- Lights flash when activated/deactivated ■ Optional inclinometer.

Reference	77 11 229 351
LT	1 h

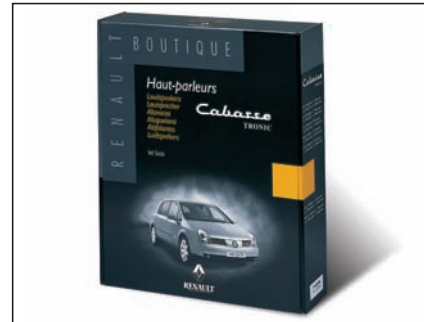
Optional inclinometer

Reference	77 01 416 069
-----------	----------------------

CABASSE TRONIC KIT

- Maximum power: 4 x 150 W n 2 boomers, diameter 130 mm for the front doors n 2 tweeters, diameter 40 mm for the dashboard
- 2 boomers, diameter 130 mm for the rear doors ■ 2 tweeters, diameter 40 mm for the rear doors ■ Neodymium speaker magnet
- Passband: 50 – 20 000 Hz n Output: 90 dB/W/m ■ Fibreglass membrane ■ Rubber suspension.

Reference	77 11 221 081
-----------	----------------------



AAF653



AAG412

DASHBOARD SUPPORT FOR NAVIGATION SCREEN

- Retaining bracket fastens to dashboard ■ Specific to Espace and Grand Espace IV ■ To be used with VDO MS 5400, MS 5500, MS 5600 and MS 5700 navigation systems.

Reference	77 11 222 540
-----------	----------------------



AAF556 (PHOTO 1)



AAF557 (PHOTO 2)

HANDS-FREE KIT WITH WIRE

- The kit for vehicles fitted with factory pre-equipment contains: retaining bracket, wiring and universal housing
- The kit for vehicles without factory pre-equipment contains: retaining bracket, wiring, universal housing, microphone and antenna
- The specific cradle for the customer's mobile phone should be ordered separately.

ESPACE IV Phase I

Designation	Characteristics	Reference	LT
Central hands-free kit LH and RH drive (Photo 1)	Vehicle with factory pre-equipment	77 11 226 322	1h
	Vehicle without pre-equipment	77 11 226 323	1.5h
Dashboard hands-free kit LH and RH drive (Photo 2)	Vehicle with factory pre-equipment	77 11 226 324	1h
	Vehicle without pre-equipment	77 11 226 325	1.5h

ESPACE IV Phase 2

Designation	Characteristics	Reference	LT
LH drive hands-free kit	For vehicles without factory pre-equipment	77 11 419 590	1h
RH drive hands-free kit		77 11 419 596	1.5h

HANDS-FREE CONTROLS FOR BLUETOOTH (CMLTB) TELEPHONE

- Automatic wireless telephone connection to car stereo and microphone in the vehicle
- Automated transfer of address book (telephone + SIM card) and call record
- Continuity of conversation (automatic switch to vehicle speakers – entering – or to telephone – leaving)
- Total integration (control using controls under steering wheel and display) and audio quality (microphone + sound on 2 front radio speakers)
- Automatic call hold (safety)
- Not compatible with 6-CD changers in radio facade and navigation systems.



ESPACE IV Phase 2 with original car stereo with offset display

Reference	77 11 419 316
-----------	----------------------

CEILING VIDEO

ESPACE IV Phases I and 2

- Not compatible with the sunroof option
- Screen and interface allow DVD drive and/or camcorder and/or games console to be connected
- LCD colour screen, active T.F.T. matrix, wide-screen format, 7 inch diagonal
- Controls and RM-X122 infrared remote control supplied
- DVD drive fastening kit (DVX 11) with bolts and screws is included with the DVD drive.

SCREEN

Reference	77 11 226 652

DVD DRIVE

Reference	77 11 224 058

HEADSET

Reference	77 11 237 546



ON-BOARD VIDEO ESPACE IV

- Wide screens, 7 inches (17.8 cm diagonal)
- Different screen settings possible (brightness, contrast, colour, format)
- High-resolution screen, 334,000 pixels and active matrix
- Screens perfectly integrated in head restraints: validated by Renault Design (respects the interior style of the vehicle)
- Validation by Renault Safety Department crash-tests
- DVD/CD/MP3 drive and DIVX function on Phase 1 prime and Phase 2.

For the head-restraint screen references, see following page

ESPACE IV PHASE I

Designation	Reference	Allocation
Blue finois video head restraint (DRAP03)	77 11 221 469	Expression
Grey-beige finois video head restraint (DRAP02)	77 11 221 470	Expression
Blue Alcantara video head restraint (DRAP04)	77 11 221 471	Privilège
Grey-beige Alcantara video head restraint (DRAP05)	77 11 221 472	Privilège
Dark grey-beige leather video head restraint(CUIR04)	77 11 221 473	Optional
Navy blue leather video head restraint (CUIR03)	77 11 221 474	Optional
Carbon leather video head restraint (CUIR01)	77 11 221 475	Initiale
DVD drive 1 DIN	77 11 218 019	All
HF headset	77 11 218 020	All
Configurable control centre	77 11 218 021	All
1-DIN unit	77 11 213 366	All
DVD installation kit Espace IV	77 11 221 851	All
Carbon protection covers	77 11 223 985	-
Grey-beige protection covers	77 11 223 986	-
Steel protection covers	77 11 223 987	-
Blue protection covers	77 11 223 988	-

ESPACE IV Phase I prime and Phase 2

Designation	Reference	Allocation
Very dark carbon Arolla fabric head restraint	77 11 419 443	Expression
Very dark carbon Riviera leather head restraint	77 11 419 434	Expression
Very dark carbon Catanzaro fabric head restraint	77 11 419 437	Dynamique
Very dark carbon Krona alcantara head restraint	77 11 419 444	Privilège
Beige Krona alcantara head restraint	77 11 419 445	Privilège
Beige Haircell leather head restraint	77 11 419 440	Initiale
Very dark carbon Haircell leather head restraint	77 11 419 435	Initiale
Chestnut Haircell leather head restraint	77 11 419 442	Initiale
DVD drive (remote control included)	77 11 419 327	All
Installation kit (2 headsets included)	77 11 419 329	All
Additional headset	77 11 419 328	-
Additional remote control	77 11 419 421	-
Car stereo connection option	77 11 419 553	-
	77 11 419 310	-



AAF 663



AAF 660



AAF 661



AAF 320



AAF 662



AAF 659



AAF 318

Espace



Espace

ESPACE

07

TOW BARS / CARRYING ACCESSORIES



AAC304

STEEL HARMONY BARS

- Set of bars supplied with clamping wrench and mounting instructions
- Black PVC-lined tubes ■ Retaining brackets in non-corroding galvanised steel ■ Pre-assembled bars ■ Weight limit on roof (including the bars): JEO 80 kg and J63 60 kg.

Reference	60 25 315 692
LT	0.2 h

ROOF RACK

- Can be matched to the body colour ■ Supplied in black.

ESPACE JEO

Reference	60 25 316 593
LT	0.7 h

GRAND ESPACE JEO

Reference	60 25 316 594
LT	0.7 h

Adapter for bicycle carrier and ski carrier

Reference	60 25 313 356
-----------	----------------------



AAC311



AAE345

QUICK RELEASE TOW BAR

- Ball removable without tools ■ Delivered with attachment kit and mounting instructions ■ Composition: one black fitting ■ 13 pin electrics kit supplied with tow bar.

Reference	60 25 410 552
LT	2.5 h

Adapter, 7/13 pins

Reference	60 25 309 761
-----------	----------------------



AAE347

ROOF BOX

- Is fitted on the original roof rack or Steel Harmony bars ■ ABS
- Jack-assisted side opening and closing, central locking at 2 points
- 350 litres ■ Dimensions: l 150 x w 94 x h 23/34 cm.

Reference	60 25 307 835
-----------	---------------

Adapter for original roof rack of Espace JEO

Reference	60 25 313 356
-----------	---------------

SKI BOX

- Installed on the original roof rack or on Steel Harmony bars ■ ABS
- Jack-assisted side opening and closing, central locking at 2 points
- 330 litres ■ Dimensions: l 224 x w 53 x h 23/34 cm ■ For Espace or Grand Espace fitted with a standard sunroof, use an additional bar (60 25 316 506).

Reference	60 25 307 836
-----------	---------------

Adapter for original roof rack of Espace JEO

Reference	60 25 313 356
-----------	---------------



AAC348



AAC370

SKI CARRIER ON BARS

- Can be fitted on original bars.

SKI CARRIER, 3 PAIRS

Reference	60 25 308 828
-----------	---------------

SKI CARRIER, 4 PAIRS

Reference	60 25 171 883
-----------	---------------

ALUMINIUM SKI CARRIER, 6 PAIRS

Reference	60 25 310 191
-----------	---------------

Adapter for original roof rack of Espace JEO

Reference	60 25 313 356
-----------	---------------



AAC373

SKI CARRIER ON TAILGATE

- Can carry 6 pairs of skis or 2 monoskis and 4 pairs of skis ■ Key locking at 4 points ■ Aluminium structure ■ Attachment on the roof rack rails
- Compatible with Espace J63 and JEO.

Reference	60 25 313 669
LT	0.25 h

Kit for conversion of tailgate bicycle carrier into a ski carrier

Reference	60 25 313 755
LT	0.75 h

BIKE-CARRIER ON TAILGATE

- Enables the tailgate to be opened ■ Hides neither the registration plate nor the rear lights ■ Can carry 3 bicycles ■ Attached to the roof rack rails
- Aluminium frame and steel rails ■ Nylon tensioning strap ■ Does not interfere with use of tow bar ■ Espace J63 and JEO compatible.

Reference	60 25 307 807
LT	0.25 h



AAC359



AAC363

INTERIOR BIKE CARRIER ESPACE JEO

- Allows the installation of 2 bicycles (by removing the front wheel) in the vehicle ■ Can be easily attached to the seat anchorage points ■ Possible to transport up to 4 bikes by using 2 kits.

Reference	60 25 314 084
-----------	---------------

TOUR BICYCLE CARRIER ESPACE JEO

- Top-of-the range aluminium bicycle carrier ■ 3 bicycle carriers can be fastened on the roof rack ■ Installed on the original roof rack (provide for adapter) or on Steel Harmony bars ■ Automatic clamp adjustment.

Reference	60 25 403 025
-----------	---------------

Adapter for original roof rack

Reference	60 25 313 356
-----------	---------------



AAC353



AAC354

POWER-ASSISTED BICYCLE CARRIER

- Assistance is provided by a pneumatic jack.

Reference	60 25 314 809
-----------	---------------

Kit for mounting on Steel Harmony bars and J63

Reference	60 25 314 813
-----------	---------------

Support for adaptation to the integral roof rack

Reference	60 25 313 356
-----------	---------------



AAC509

ROUAGE SEAT COVER ESPACE JEO

KIT OF 5 COVERS NOT COMPATIBLE WITH SIDE AIRBAG

- 2 front seats without tray + 3 rear seats with integral head restraints.

Reference	60 25 313 202
LT	1.5 h

- 2 front seats without tray + 3 rear seats with comma type head restraints.

Reference	60 25 316 453
LT	1.5 h

- 2 front seats with tray + 3 rear seats with integral head restraints.

Reference	60 25 313 203
LT	1.5 h

- 2 front seats with tray + 3 rear seats with comma type head restraints.

Reference	60 25 316 456
LT	1.5 h

- 2 electric-adjustable front seats + 3 rear seats with integral head restraints.

Reference	60 25 313 207
LT	1.5 h

- 2 electric-adjustable front seats + 3 rear seats with comma type head restraints.

Reference	60 25 316 454
LT	1.5 h

KIT OF 5 SIDE AIRBAG-COMPATIBLE COVERS

- 2 front seats without tray + 3 rear seats with comma type head restraints.

Reference	60 25 316 216
LT	1.5 h

- 2 front seats with tray + 3 rear seats with comma type head restraints.

Reference	60 25 316 217
LT	1.5 h

- 2 electric-adjustable front seats + 3 rear seats with comma type head restraints.

Reference	60 25 316 218
LT	1.5 h

KIT OF 2 FRONT COVERS

- Front seat with tray.

Reference	60 25 313 204
LT	0.6 h

COVER FOR REAR SEAT

- Per unit for seat with integral head restraint.

Reference	60 25 313 205
LT	0.3 h

- Per unit for seat with comma-type head restraint.

Reference	60 25 316 451
LT	0.3 h

ERIDAN WHEEL (RIM + TYRE) ESPACE JEO

- Complete assembly ■ Supplied in fours with nuts and bolts ■ Aluminium wheel assembly, balanced ready for fitting, to be supplemented with anti-theft nuts and bolts ■ Application: see User Manual for the vehicle.

215/55 X 16 TYRE

Reference	60 25 371 648
LT	0.7 h

225/55 X 16 TYRE

Reference	60 25 371 649
LT	0.7 h



AAF620



AAC510

FRISSON SEAT COVER ESPACE JEO

KIT OF 5 COVERS NOT COMPATIBLE WITH SIDE AIRBAG

- 2 front seats without tray +
3 rear seats with integral head restraints.

Reference	60 25 313 209
LT	1.5 h

- 2 front seats without tray +
3 rear seats with comma type head restraints.

Reference	60 25 316 452
LT	1.5 h

- 2 front seats with tray +
3 rear seats with integral head restraints.

Reference	60 25 313 210
LT	1.5 h

- 2 front seats with tray +
3 rear seats with comma type head restraints.

Reference	60 25 316 457
LT	1.5 h

- 2 electric-adjustable front seats +
3 rear seats with integral head restraints.

Reference	60 25 313 214
LT	1.5 h

- 2 electric-adjustable front seats +
3 rear seats with comma type head restraints.

Reference	60 25 316 455
LT	1.5 h



AAC508

LINOSA SEAT COVER ESPACE JEO

- Not available for seats with side airbag.

KIT OF 5 COVERS

- 2 front seats without tray +
3 rear seats with integral head restraints.

Reference	60 25 310 416
LT	1.5 h

- 2 front seats with tray +
3 rear seats with integral head restraints.

Reference	60 25 310 417
LT	1.5 h

KIT OF 2 FRONT COVERS

- Front seats with trays.

Reference	60 25 313 344
LT	0.6 h

COVER FOR REAR SEAT

- Per unit for seat with integral head restraint.

Reference	60 25 310 419
LT	0.3 h

COVER FOR FRONT OR REAR ARMREST

- Per unit.

Reference	60 25 310 415
LT	0.2 h



AAC526

EMBROIDERED FLOOR CARPET

- 100% polypropylene carpet with roundseamed border.

HEATHER COLOUR

Espace JEO until August 2000

- 2-piece front carpet.

Reference	60 25 308 212
-----------	---------------

- Middle carpet, exclusively for version with seat fastening rings.

Reference	60 25 308 214
-----------	---------------

- Boot carpet, exclusively for version with seat fastening rings.

Reference	60 25 308 215
-----------	---------------

- Boot carpet for Grand Espace JEO with rings.

Reference	60 25 313 300
-----------	---------------

- Rear rail carpet.

Reference	60 25 313 315
-----------	---------------

- Kit of 5 individual carpets for the rear seats.

Reference	60 25 313 170
-----------	---------------

LAVENDER COLOUR

Espace JEO E1 from September 2000

- 2-piece front carpet.

Reference	60 25 404 549
-----------	---------------

- Short middle carpet.

Reference	60 25 404 554
-----------	---------------

- Long middle carpet, exclusively for version with seat fastening rings.

Reference	60 25 404 555
-----------	---------------

- Boot carpet, exclusively for version with seat fastening rings.

Reference	60 25 404 858
-----------	---------------

BLUE HUAN COLOUR

Espace JEO E2/E3 from September 2000

- 2-piece front carpet.

Reference	60 25 404 413
-----------	---------------

- Short middle carpet.

Reference	60 25 404 587
-----------	---------------

- Long middle carpet, exclusively for version with seat fastening rings.

Reference	60 25 404 630
-----------	---------------

- Boot carpet, exclusively for version with seat fastening rings.

Reference	60 25 404 409
-----------	---------------

- Boot carpet for Grand Espace with rings.

Reference	60 25 404 410
-----------	---------------

- Rear rail carpet.

Reference	60 25 404 862
-----------	---------------

- Kit of 5 individual carpets for the rear seats.

Reference	60 25 404 411
-----------	---------------



AAC611

FLEXIBLE BOOT PROTECTION MAT ESPACE JEO

- Moulded to match the shape of the boot, flexible, waterproof and non-skid.

Reference	60 25 306 686
-----------	---------------

SEAT NET

- For passenger seats, front or rear.

Reference	60 25 311 777
LT	0.1 h



AAC572



AAC574

ENVELOPE NET ESPACE JEO

- Elastic net with 2 positions: envelope position or flat in the back of the boot. ■ Is fastened to the seat attachment rings and specific mountings.

Reference	60 25 307 849
-----------	---------------

SECURITY NET ESPACE JEO

- Net in fibreglass stitch, metallic upper attachments and floor fastenings
- Positioned behind the front seats or behind the first row of rear seats.

Reference	60 25 307 598
LT	0.7 h



AAC551



AAC612

PROTECTIVE BOOT LOADLINER

ESPACE J63 AND J63

- Rigid boot protection in 5-seater configuration ■ Thermoformed PS/PE
- Dimensions: 1200 x 900 x 300 mm ■ Not compatible with Grand Espace.

Reference	60 25 308 380
LT	0.2 h

ESPACE JEO

- Rigid boot protection in 2-seater configuration
- Not compatible with Grand Espace, Cyclade and Authentique versions.

Reference	60 25 310 157
LT	0.2 h

FLEXIBLE LUGGAGE COVER ESPACE JEO

- Identical to standard option ■ In 2 parts: one in fabric and a dismantlable rear parcel shelf which can be used alone ■ Not compatible with the Authentique version ■ Cannot be mounted on Grand Espace.

Reference	60 25 370 527
LT	0.1 h



AAC558

RIGID LUGGAGE COVER

- Articulated platform in carpet incorporating rigid cross-ties ■ Supplied with retaining brackets to be attached to the rear wheel arch trims
- Cannot be mounted on Authentique and Cyclade versions.

ESPACE JEO

Reference	60 25 308 221
LT	0.5 h

GRAND ESPACE

Reference	60 25 313 307
LT	0.5 h



AAC560



AAC584

STORAGE UNIT

- Fitted in place of a rear seat ■ Capacity: 45 litres ■ Lid with recesses for cups ■ Modular internal separation ■ Magazine holder on the outside.

STORAGE UNIT FOR FLOOR EQUIPPED WITH RINGS

Reference	60 25 305 652
LT	0.2 h

MOBILE ASHTRAY ESPACE JEO

Reference	60 25 307 369
-----------	----------------------



AAC587

SUNBLINDS ESPACE JEO

- Roller blinds.

REAR DOOR WINDOW BLINDS

Reference	60 25 308 664
LT	0.5 h

QUARTER WINDOW BLINDS (not compatible with Grand Espace)

Reference	60 25 308 665
-----------	----------------------

TAILGATE SUNSCREEN

Reference	60 25 308 666
LT	0.5 h



AAC541



AAC546

REVOLUTION COUNTER ESPACE JEO

■ Integrated in air vent in front of the driver (left-hand drive only).

PETROL (from 06/01/1997)

■ Not compatible with V6 BVA control on floor.

Reference	60 25 311 350
LT	0.7 h

DIESEL (from 06/01/1997)

Reference	60 25 311 351
LT	0.7 h

Additional electrics kit for Espace JEO prior to 06/01/1997

Reference	60 25 309 976
LT	1 h

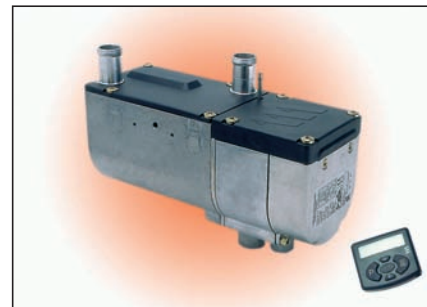
INDEPENDENT HEATING ESPACE JEO

■ Uses the vehicle's fuel ■ Exclusively with diesel engines GBT, 2.2 dT, 2.2 dCi and 1.9 dCi without boiler.

Reference	60 25 403 637
LT	6-7 h

■ Additional conversion/autonomous ■ Uses the vehicle's fuel
■ Exclusively with diesel engines 2.2 dCi and 1.9 dCi with additional boiler.

Reference	60 25 371 559
LT	5 h



AAF622



AAC576

ADDITIONAL REAR SEAT COMMA-TYPE HEAD RESTRAINT ESPACE JEO

■ Important: rail and ring seats are not interchangeable.

VERSION	REFERENCE	LT	EQUIPMENT	CLOTH	ANCHORAGE	CHARACTERISTICS
CYCLADE G	60 25 317 464	0.1 h	E1	O4	Rings	-
CYCLADE D	60 25 317 462	0.1 h	E1	O4	Rings	-
RTE	60 25 317 240	0.1 h	E1	O1	Rings	-
RXE	60 25 317 244	0.1 h	E2	O2	Rings	Compatible with armrests
RXT	60 25 317 260	0.1 h	E3	O3	Rings	Compatible with armrests
RXT	60 25 317 254	0.1 h	E3	Leather O1	Rings	Compatible with armrests
FIDJI/2001	60 25 317 263	0.1 h	E2	O5	Rings	Compatible with armrests
AUTHENTIQUE	60 25 317 462	0.1 h	E1	O9	Rings	Compatible with armrests
EXPRESSION TAYLOR MADE	60 25 406 965	0.1 h	E2	O6	Rings	Compatible with armrests
THE RACE	60 25 406 684	0.1 h	E2	11	Rings	Compatible with armrests
RXE	60 25 317 248	0.1 h	E2	O2	Rails	Compatible with armrests
RXT	60 25 317 252	0.1 h	E3	O3	Rails	Compatible with armrests
RXT	60 25 317 256	0.1 h	E3	Leather O1	Rails	Compatible with armrests
FIDJI/2001	60 25 317 265	0.1 h	E2	O6	Rails	Compatible with armrests
EXPRESSION TAYLOR MADE	60 25 406 969	0.1 h	E2	O6	Rails	Compatible with armrests
PRIVILÈGE	60 25 406 973	0.1 h	E3	O7	Rails	Compatible with armrests
THE RACE	60 25 406 686	0.1 h	E2	11	Rails	Compatible with armrests
INITIALE	60 25 404 726	0.1 h	E5	Ticui 1	Rails	Compatible with armrests

ADDITIONAL REAR SEAT INTEGRAL HEAD RESTRAINT ESPACE JEO

■ Important: rail and ring seats are not interchangeable.

VERSION	REFERENCE	LT	EQUIPMENT	CLOTH	ANCHORAGE	CHARACTERISTICS
RTE/ALIZE	60 25 370 432	0.1 h	E1	O1	Rings	-
RXE	60 25 370 436	0.1 h	E2	O2	Rings	Compatible with armrests
RXT	60 25 370 948	0.1 h	E3	O3	Rings	Compatible with armrests
RXT	60 25 310 645	0.1 h	E3	Leather O1	Rings	Compatible with armrests
RXE	60 25 370 440	0.1 h	E2	O2	Rails	Compatible with armrests
RXT	60 25 370 444	0.1 h	E3	O3	Rails	Compatible with armrests
RXT	60 25 310 644	0.1 h	E3	Leather O1	Rails	Compatible with armrests



AAC575



AAC289

**MUDFLAPS
ESPACE JEO**

■ Semi-flexible moulded material.

FRONT MUDFLAPS

Reference	60 25 308 223
LT	0.2 h

REAR MUDFLAPS

Reference	60 25 308 224
LT	0.2 h

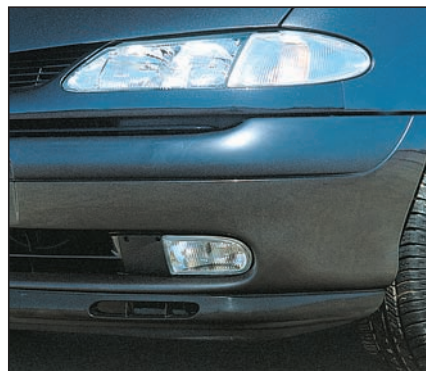
**AIR DEFLECTORS
ESPACE JEO**

■ Material: smoked methacrylate ■ Mounting method: embedded
■ Fastening: stainless steel clips, mounting without screws ■ Clip fitting tool provided ■ In sets of 2 in front.

Reference	60 25 308 225
LT	0.5 h



AAC286



AAE855

**COMPLETE FOG LIGHT KIT
ESPACE JEO**

FROM 1996 TO 22/03/1998

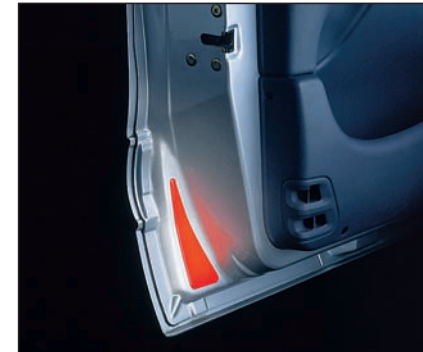
Reference	60 25 308 228
LT	2.5 h

FROM 22/03/1998 TO SEPTEMBER 1998

Reference	60 25 370 953
LT	2.5 h

FROM SEPTEMBER 1998

References	60 25 370 953 60 25 316 476 (Fog light wiring kit)
LT	2.5 h



AAC295

DOOR REFLECTORS

■ Set of 6.

Reference	60 25 311 585
LT	0.7 h

**PIONEER MONO-CD DRIVE
ESPACE JEO**

■ For replacement of a 4x8 W or 4 x15 W radio cassette player
■ Same radio functionalities as the radio cassette player.

Reference	60 25 404 649
LT	0.5 h



AAC492



AAF621

**INFRARED HEADSET
ESPACE JEO**

■ Independent sound adjustment on each headset ■ Designed for Radiosat systems with standard infrared remote control
■ Auditorium 4x15 W and Grand auditorium 4x25 W or 4x40 W.

TRANSMITTER KIT AND 2 HEADSETS

Reference	60 25 314 883
LT	1 h

Additional headset

Reference	60 25 301 094
-----------	---------------

**6-SPEAKER KIT
ESPACE JEO**

■ Auditorium Prestige ■ 100 W.

Reference	60 25 311 535
LT	0.7 h



AAC444

Espace